

EMI SUPPRESSOR FERRITE CORES
MODELO RP

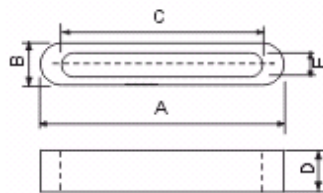
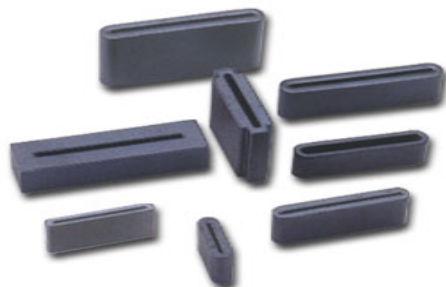


FIG.1

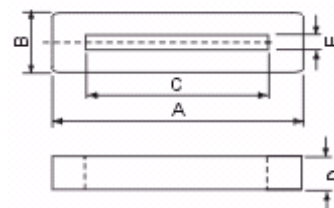


FIG.2

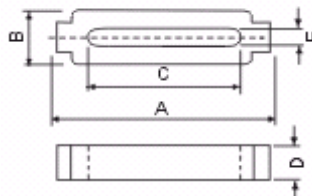


FIG.3

ITEM	Fig	A	B	C	D	E	IMPEDANCIA	
							() min	
							25MHz	100MHz
16x5x12	1	16±0.4	5.0±0.3	11.5±0.4	12.0±0.5	0.5+0,6-0,1	44	90
16X5X15	1	16±0.4	5.0±0.3	11.5±0.4	15.0±0.6	0.5	50	110
18X5X18	1	18±0.4	5.0±0.3	14.0±0.4	8.0±0.4	1.0±0.3	24	55
20.5X3.5X15	1	20±0.5	3.5±0.15	16.5±0.4	15.0±0.6	0.5	34	88
22.35X7.75X19.0!	2	22.35±0.51	7.75±0.38	14.0±0.25	19.05±0.64	1.5±0.25	68	120
23.3X3X7	2	22.3±0.7	3.0±0.3	20.0±0.5	7.0±0.4	0.9±0.15	20	60
23.5X6.3X10	2	23.5±0.7	6.±0.5	18.4±0.4	10.0±0.4	1.1±0.3	32	75
25X5X12	1	25.0±0.7	5.0±0.4	21.0±0.5	12.0±0.5	1.1±0.2	27	75
28X3.5X15	1	28.0±0.8	3.5±0.15	24±0.4	15.0±0.6	0.5	30	88
28X6.5X15	1	28.0±0.8	6.5±0.5	23±0.5	15.0±0.6	1.0±0.3	30	85
28.5X6.5X18	1	28.5±0.8	6.5±0.5	23.5±0.5	18.0±0.7	1.0±0.3	40	95
28x7.7x14.6	3	28.0±0.8	7.7±0.5	23.0±0.5	14.6±0.4	1.4±0.4	38	85
28X7.7X22	2	28.0±0.8	7.7±0.5	23.0±0.5	22.0±0.6	1.4±0.4	52	110
28.6X7.7X25	1	28.6±0.85	7.7±0.5	23.6±0.8	25.0±0.8	1.8±0.4	45	95
31x5x8	1	31.0±0.8	5.0±0.4	27.0±0.6	8.0±0.4	0.5	21	60
31x5x9	1	31.0±0.8	5.0±0.4	27.0±0.6	9.0±0.4	0.5	25	75
31x5x12	1	31.0±0.8	5.0±0.4	27.0±0.6	12.0±0.5	0.5	30	85
31x5x22	1	31.0±0.8	5.0±0.4	27.0±0.6	22.0±0.6	0.5	46	130
33.5X3.5X15	1	33.5±0.9	3.5±0.3	27.0±0.6	15.0±0.6	1.4±0.4	21	68
33.5X4X12	1	33.5±0.9	4.0 -0,2	27.0±0.6	12.0±0.5	1.4±0.4	19	60
33.5x6.5x7	1	33.5±0.9	6.5±0.5	27.0±0.6	7.0±0.4	1.4±0.4	20	57
33.5x6.5x8	1	33.5±0.9	6.5±0.5	27.0±0.6	8.0±0.4	1.4±0.4	21	60
33.5x6.5x10	1	33.5±0.9	6.5±0.5	27.0±0.6	10.0±0.4	1.4±0.4	24	65
33.5X6.5X15	1	33.5±0.9	6.5±0.5	27.0±0.6	15.0±0.6	1.4±0.4	32	81
33.5X6.5X22	1	33.5±0.9	6.5±0.5	27.0±0.6	22.0±0.6	1.4±0.4	43	95
38.1X12X25.4	2	38.1±1.0	12.0±0.6	26.7±0.6	25.4±0.8	1.9±0.4	83	145
40X6.5X6	1	40.0±1.0	6.5±0.5	35.0±0.7	6.0±0.3	1.4±0.4	16	50
40X6,5X12	1	40.0±1.0	6.5±0.5	35.0±0.7	12.±0.5	1.4±0.4	25	72



Prodin Ferrite S.L.

Polígono Industrial "Molí dels Frares" Calle C/A - Nave 2
 08620 Sant Vicenç dels Horts - Barcelona - España
 T: +34 936 724 610
 info@prodinferrite.com - www.prodinferrite.com

ITEM	Fig	A	B	C	D	E	IMPEDANCia	
							() min 25MHz	100MHz
40X6.5X18	1	40.0±1.0	6.5±0.5	35.0±0.7	18.0±0.5	1.4±0.4	32	84
40X6.5X20	1	40.0±1.0	6.5±0.5	35.0±0.7	20.0±0.6	1.4±0.4	35	88
40X6.5X22	1	40.0±1.0	6.5±0.5	35.0±0.7	22.0±0.6	1.4±0.4	37	95
45.1X12.5X10	2	45.1±1.0	12.5±0.6	34.5±0.8	10.0±0.4	1.5±0.5	30	72
45.1X12.5X28.6	2	45.1±1.0	12.5±0.6	34.5±0.8	28.6±0.8	1.5±0.5	80	165
45,2X6.5X12	1	45.2±1.0	6.5±0.5	40.0±0.8	12.0±0.5	1.4±0.4	24	72
49.6X4X12	1	49.6±1.0	4.0±0.2	44.0±0.8	12.0±0.5	1.4±0.4	19	63
49.6X6.5X12	1	49.6±1.0	6.5±0.5	44.0±0.8	12.0±0.5	1.4±0.4	22	68
57.6X6.5X12	1	57.6±1.2	6.5±0.5	52.0±1.0	12.0±0.5	1.4±0.4	22	70
60.6X6.5X12	1	60.6±1.2	6.5±0.5	55.0±1.0	12.0±0.5	1.4±0.4	28	92